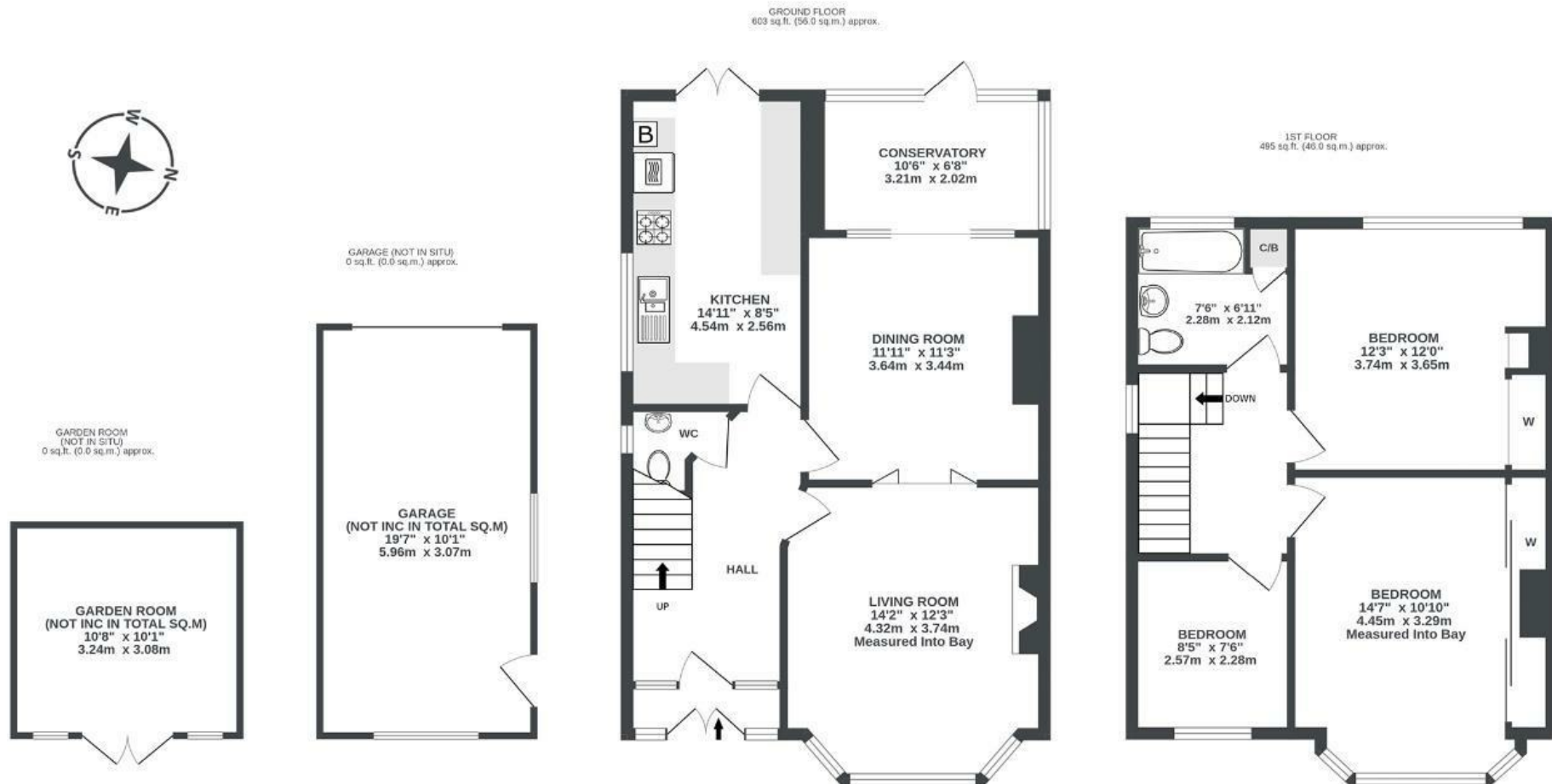


Stoneleigh Crescent

KNOWLE

APPROXIMATE FLOOR AREA
102 SQM / 1098 SQFT



Illustrations are for reference purposes only, measurements are approximate, not to scale.

Boardwalk

Stoneleigh , BRISTOL

£

£520,000



BS4 2RQ

zzz

3 Bedrooms



2 Bathrooms

We've loved living at Stoneleigh Crescent over the last 20 years. We were immediately struck by the light and airy feel of the house, and the lovely garden that gets the sun pretty much all day.

It a great location within walking distance of four South Bristol Parks, Perretts, Amos Vale, Victoria and behind Stoneleigh is Redcatch our local park, with a community garden and cafe selling home grown veg and brewing a lovely coffee. They also have an event space and put on music and comedy nights, with visiting restaurants providing yummy street food. Our children went to nearby Hillcrest School and the house is a 5 min walk to Knowle Park Primary School. Both great and very sought after schools. Stoneleigh has a great friendly community feel with neighbours arranging events on the Crescent, like carols at Christmas.

We will be sad to say goodbye to the house and neighbourhood, but promised ourselves once our now grown-up children had finished their education, we would move the countryside.

